



# TAMPA PALMS NEWSLETTER

Newsletter Dec 2014 -Jan 2015

## ***Bruce B Downs Is The News For 2015 Construction Commences / New Development & Park***

**Hillsborough  
County  
To Hold Public  
Meeting**

**Monday, Jan  
12th 6 PM -7:30  
PM  
Tampa Palms  
Elementary  
School**

**Dog Park &  
Shops Coming**



### ***And It Begins....***

Hillsborough County has awarded the contract for the widening of Bruce B Downs from Palm Springs Blvd. (in TPOST 3) through Tampa Palms and south to Bearss.

Prince Contracting, the same company which built the New Tampa Bridge and is currently widening I-75 in this area, is the prime contractor.

Crews are already onsite surveying and preparing for the arduous tasks of relocating and replacing utility services. In addition to and before the actual roadwork, crews will be replacing the sewer pipes, removing the old 54 inch potable water pipe and relocating underground services for providers such as Verizon.

### ***New Development/ New Dog Park***

The County Commission has set in motion plans for a public-private development of the County's vacant land across from the entrance to Hunters Green. This parcel, some 80+ acres, is the last development opportunity along BB Downs in the New Tampa area.

The greenlight was given to the proposal submitted by Harrison Bennet Properties. The plans offer a wide range of amenities in a boardwalk filled and pedestrian friendly venue.

The property will be home to an on-site cultural center, a much needed dog park, unique shops and restaurants anchored by a green grocer, with a small residential component. More information on dates will follow.





# News From the TPOA



## You Can Feel It In The Air ..... Winter Is Here

Winter hours are in effect for both Hampton Park and the facilities at Compton Park.

**Winter Hours**  
**Mon - Thurs 8 AM - 9 PM**  
**Friday- Saturday 8 AM - 10 PM\***  
**Sunday 8 AM- 8 PM**

### Compton Pool Winter Operation

Tampa Palms makes swimming available at the Compton Park pool, weather permitting, even during the cold weather. A heated swimming pool is a special Tampa Palms luxury.

When the night temperature routinely falls to 50 degrees or below, the following guidelines will allow everyone to enjoy a warm Compton pool until our warm Florida weather returns:

- **The pool will open at 9AM every day of the week during the winter, weather permitting.**
- The pool will be covered each night with a heat-saving cover.
- The pool will not open until the outside air temperature, measured at Compton Park with an outdoor thermometer, reaches a minimum of 50 degrees.
- If it is raining, stormy or windy, the pool cover cannot be removed or put on.

For more information as to the current temperatures or see if the pool is open, call Compton Park 972-0897.

## TPOA Annual Meeting For 2015

TPOA Annual Meeting of the Village Voting representatives is the order of business for January.

**TPOA ANNUAL MEETING**  
***Keeping Tampa Palms Fresh***  
**Thursday, January 29, 2015 at 7 PM**  
**Compton Park New Meeting Room**

One voter representative for each village attends the roundtable which is open to all owners in Tampa Palms.

This year's meeting will feature among other things:

- The first meeting in the brand new Compton Meeting Room Addition
- Election of directors from three sub-districts, who will serve for the next two years.
- Review of construction projects affecting Tampa Palms

Voting Members must be owners or their official alternates who must be owners. Proxies are not allowed per the TPOA documents.

This year there will be election for Directors for three of the five voting districts:

- District 1 Current Representative: Barbara Shimer
- District 4 Current Representative: Vacant
- District 5 Current Representative: Vacant

As provided for in the governing documents, the Nominating Committee will present a slate for consideration. Nominations will also be accepted from the floor.

Note: the TPOA Annual Meeting is private to the owners of Tampa Palms. Those renting in Tampa Palms, owners in neighboring communities and members of the press are welcome at the CDD meetings but not the TPOA annual, budget or board meetings. (This is true for all similar HOA's.)

Please mark your calendars and attend if possible.

Why leave town for your executive physical?

**The Monsour Executive Wellness Center at USF Health** provides concierge style healthcare to busy executives right here at home.



executivehealthtampa.com  
executive@health.usf.edu  
(813) 974-1794



# Tampa Palms Women's Club

## A Season of Giving



### A Spectacular Potluck Event

The TPWC celebrated the Season of Giving at their annual December holiday meeting with an extraordinary luncheon. Each member brought a special treat from her kitchen and the group hosted representatives from the charities that the TPWC supports during the year.



Luncheon was shared with representatives of the very special and very worthy charities selected by the ladies of the Tampa Palms Women's Club to support:

- Fisher House
- God's Pedal Power,
- House of Hope,
- Kids and Canines,
- OASIS, and
- Rich House.

The TPWC also presented financial donations to these most worthy groups, donations that were the result of the Club's tireless, year-long fundraising efforts.

In addition to the support provided to these charities, gifts were donated by the ladies to the representative of our local schools, Tampa Palms Elementary and Chiles Elementary School.

These gifts are designed to assure that each child, no matter the circumstances, has a gift this holiday.



### Off And Running For the New Year

Open those gifts from "creative folks" with no more dread.



TPWC White Elephant Sale  
**Thursday, February 5th**

Full details in January, just tuck away the date and the goodies to sell.

### February Activity

A day at the races, with a race actually named for the Tampa Palms Women's Club and an opportunity for photo's in the winner's circle. (No need to buy the horse or ride him.)

**February 12, 2015**

**Note: this is the 2nd Thursday of the month,**

Reserve seating, indoor clubhouse buffet lunch and racing program for \$21.00 per member.



### Tampa Palms Community Yard Sale

Sponsored By Tampa Palms Women's Club  
Funding the TPWC / USF Scholarship

Save your "treasures" and sell them in the safety of Compton Park. No advertising your home address, no strangers walking around your yard.



**Saturday, March 21st**  
**9 AM to 1 PM**

For more information please call 813 615-9600



# Tampa Palms Elementary

## "Learners Today.....Leaders Tomorrow"



*A holiday note from Kimberly Keenan, Principal of TPE.*

Dear Families,

I hope that you and your family have a safe and wonderful winter break! The winter holidays are the perfect time to read for the simple joy of reading. Writing thank you notes is also a good way to express gratitude as well as practice important writing skills.

We are looking forward to an outstanding 2015 year, working with each of our families to create the very best instructional partnership for our children.

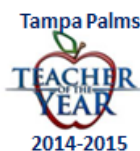
Thank you so much for all of your support.

Happy and Healthy Holidays!

Kimberly Keenan  
Principal

### Teacher of the Year

We are thrilled to announce that Ms. Mary Carroll was selected by the teachers at Tampa Palms as our Teacher of the Year.



Ms. Carroll strives to make learning fun and meaningful for her fourth grade Math and Science students each and every day. Ms. Carroll is a teacher leader at Tampa Palms: serving as the Intermediate Science contact. In this role Ms. Carroll provides professional development on the current updates and instructional best practices in Science instruction for our teachers in grades 3-5.

Ms. Carroll is also the coordinator of Tampa Palms' STEM FAIR. Ms. Carroll is truly a blessing to our school.

### Calendar Notes



Winter Break \_\_\_\_\_ Dec 22, 2014 - Jan 2, 2015  
 Sprit Night at McDonalds \_\_\_\_\_ January 14  
 End - 2nd Grading Period \_\_\_\_\_ January 16  
 Dr. Martin Luther King Day– No School \_ January 19  
 Kindergarten Round Up \_\_\_\_\_ January 21  
 Flight of the Eagle \_\_\_\_\_ January 26-30

### TPE Student Selected For All State Chorus



TPE is so pleased to announce that our own Erin Soko was selected to be part of the 200 member All-State Chorus. The competition was steep; more than 1,000 students from across the whole State of Florida auditioned for the chorus!

In all of Hillsborough County only ten students were selected for this impressive honor. Erin's hard work and dedication to success shines! Congratulations!

Thank you also to our Chorus Directors-Ms. Victoria Walsh and Ms. Becky Layton for always working hard to provide outstanding opportunities for our choral students.

### Perfect Attendance

399 students, 47% of our school population, had Perfect Attendance for the first grading period.

Pre-K	1 student
Kindergarten	56 students
1st grade	65 students
2nd grade	67 students
3rd grade	69 students
5th grade	72 students



### Reminders For Student Safety

#### Parents/Grandparents/Visitors

Parents please make sure that you have completed a Visitor/Volunteer Screening form and that you bring your driver's license to school each and every time you would like to sign in. No one can enter the school without a driver's license and completing the computerized check-in system for a visitor's badge.

#### Student Arrival Time

Parents please remember that students can't be dropped off at school prior to 7:30 AM. **There is no supervision for students at school before 7:30 AM.**



**Student Safety FIRST**



## Lawton Chiles Elementary



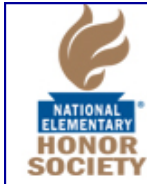
### Can Food Drive for Metro Ministries - SUCCESS!



LCE's holiday giving held strong this year with a record number of 1240 pounds of food donated to Metropolitan: 120 pounds more than last year. Our families deserve a great big, huge congratulations!

### Chiles Inducts its new NEHS Members

LCE recently inducted its third National Elementary Honor Society members. Thirty-one fifth-graders recited the NEHS pledge followed by a candle ceremony. In a traditional "pinning" ceremony.



They students pledged to *"be a strong student, achieving the most from an education: demonstrating Responsibility, showing enthusiasm and working hard in all that I do: Learn the Skills of Leadership, practicing them in all aspects of my life: be of service to my school and community, showing that I care: and be a role model for my peers, helping us all achieve our best"*.

Students receiving this honor were chosen by their teachers for exhibiting Citizenship and positive behavior in the past several years; maintaining an A/B average throughout elementary school; and demonstrating the ability to be a leader within their school and community



### Upcoming For The Falcon Family

Winter Concert #2 Incredibells, Embellish, Falcon's Pride Chorus .... **Tues & Wed Dec 16, 17 6:30 PM**

Winter Holiday..... **Dec 20th - Jan 4th**

Kindergarten Registration Round Up will be held  
**Tuesday January 27th 9 AM**

### LCE Shoots for the Stars (With Marshmallows)....

Who says physics can't be fun? Fourth grade scientists at LCE examined the effects of the transformation of energy and its effects on motion by launching soft projectiles better known as marshmallows. As 4th grade teacher, Melanie Benedict stated, "Students read several texts to learn how energy is stored and how its release affects an object's position and direction. All students then had the opportunity to investigate these forces by building a Marshmallow Flyer."

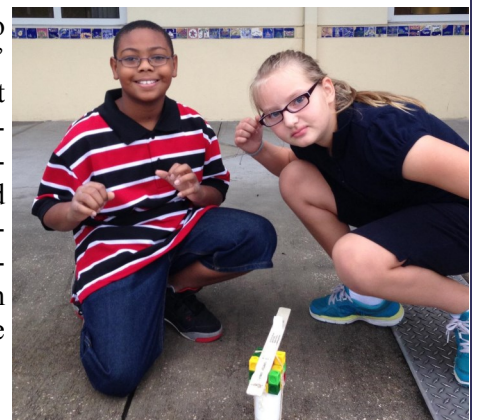
Adhering to strict guidelines for time and materials, teams of two created "Marshmallow Flyers" and competed for the school's top honor, which was won by Khalys Hamm and Victoria Radulescu-Pop (Pictured below).

The winning duo then traveled to the Hillsborough County Science Olympics held at the Museum of Science and Industry (MOSI) in November and competed with students examining catapult physics from over 80 schools under this year's theme, Science Sleuths.

The students were given 10 minutes to build Marshmallow Flyer from pre-planned blueprint specifications, and limited materials. All teams were then allowed two launches, the longest of which was used as the teams score. The Chiles duo came in 2nd place in their division.

Science teacher, Renee Stembridge said, "The students were so excited to compete among peers from other schools at MOSI. All of our students were really engaged during this unit of study. They were able to make connections by incorporating the subject areas of reading, writing and science into their performance task.

Congratulations to both of L Chiles' exceptional student physicists / engineers for their accomplishment and for making the Chiles Elementary family and their own families proud once again.





# Tampa Palms Residents

## Finally, It Is Ready To Enjoy....



### The Building Is Ready

After years of planning and saving for the new meeting room facility, the building is complete and now ready for occupancy.



Use by the owners of Tampa Palms will commence as soon as the insurance applications are accepted. (For some odd reason the underwriters would not pre-process any applications until Certificate of Occupancy was issued.)



It is anticipated that this process will be concluded the next two-three weeks.- well before the Annual Meeting at the end of January.

### A World of Owner-Use Opportunities - At No Charge



With greater meeting and dining space available, the outdoor courtyard, top of the line audio visual equipment, along with the new catering kitchen facilities, owners now have to travel no further than their own community for everything from sports parties and birthday parties, to special dinners, formal weddings and even religious celebrations

The picture to the left above shows how the main room could be set-up for a small formal dinner.

As soon as the TPOA receives an "all clear" from the insurance, Jo Ann Conrad (977-3337) will begin to schedule events in the new facility.



### Many Thanks To Florida Executive Realty

Florida Executive Realty made available Transportation Impact Fee credits to the TPOA. This generous act saved the TPOA many thousands of dollars over that which would have had to have been paid to the City of Tampa for these fees.



### Next Steps

The final steps to updating Compton Park will begin in late January with work on the existing facilities to:

- Improve the energy efficiency of the facility
- Bring the building into current code compliance, especially as relates to facility access and availability
- Replace the roof, scheduled for replacement in 2015

The work should take just under four months to complete.

The Compton Main Building remodel will be closely followed by the redesign and updating of the Compton Playground facilities which have remained closed for the construction.

### Warring Regarding Facility Use

All of the facilities for the TPOA are private, for the exclusive use of the owners and residents and are not available to the general public.

Non-owners and individuals who cannot prove they are residents may not use any of facilities - parks, recreation facilities or meeting rooms.

The facilities are not available to rent and owners may not allow non-owners to use the facilities. **If an owner has an event, the owner must be on site for**





## Tampa Palms CDD Community Parks



### Development Done The Right Way

The Tampa Palms CDD owns and has oversight responsibility for 180 separate parcels of land including the three parks:



- Oak Park
- Amberly Park
- Hampton Park.

These parks were provided to the CDD by the developers of Tampa Palms and were built as a means of fulfilling the requirements contained in the documents that permitted the development of the Tampa Palms community:

- The DRI
- The Development Orders

The Tampa Palms parks were created to support the number of residential units approved for development and to assure both the future owners, as well as, the local governments, that all the recreation needs of the community would be met.



This is not a situation unique to Tampa Palms. Other similar communities were created in the same manner, which is to say that there was a requirement to provide park/recreation lands tagged to the specific conditions of development (numbers of residential units). A few in this general area include: Hunters Green, Arbor Greene, Seven Oaks, Live Oak Preserve and many others.

The administration of these lands falls under the stewardship of the CDD. The CDD must make certain that:

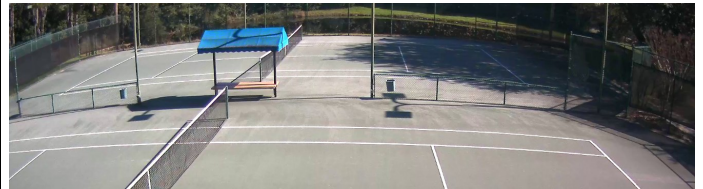
- The park lands provide the personal recreational opportunities for the Tampa Palms Area 1 & 2 for which they were constructed.
- The parks are operated in a safe manner.
- The parks and park assets are not inadvertently appropriated by commercial interests to the detriment of the personal uses of both residents and members.

### Supporting Proper Park Use

The CDD Board discussed park use at the November meeting and concluded that the CDD parks are open to the residents of Tampa Palms and the CDD members for only private and personal recreational use.

The parks are not available for commercial purpose, which is to say that they may not be used by anyone, resident or member, for whom donations or charges are accepted for activities conducted in the parks.

Members seeking to join the Tampa Palms parks will be made aware that the parks are not available for commercial activities and the application for membership will state that the applicant understands that the parks may not be used by anyone, resident or member, for whom donations or charges are accepted for activities conducted in the parks.



### Capacity and Safety

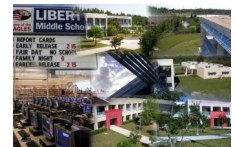
To assure that the parks continue to provide the personal recreation opportunities for which they were designed, the CDD Board ordered monitoring the membership program in the following manner: should the membership reach twenty members (memberships are individuals with their families):

1. No more applications will be accepted
2. A waiting list for potential members will be created
3. The CDD Board will be notified and staff will commence an evaluation as to if the parks can safely accommodate additional members. City of Tampa parks staff will be solicited for their input as to the proper means to evaluate park use and safety.

The number twenty seems adequate to serve the public needs as the neighboring communities have recreational opportunities of their own and the City of Tampa has the New Tampa Regional Park located in Tampa Palms North with fields, playgrounds, a skate park and rec center.



## Liberty Middle School



### Officer Delaney Reminds Parents



- Parents, Florida law requires that children (15 and under) wear a helmet while biking.
- Bringing a bike lock to school is highly recommended as well.
- Help stop bike theft and be sure to register all of your bikes with the Tampa Police Department's Bike Registry. It's easy, just stop by the SRO office at school or visit [www.tampagov.net/Police](http://www.tampagov.net/Police) to register online.

### Important Dates

December 15: Chorus Concert  
 December 16: Band Concert  
 December 17: Orchestra Concert  
 December 22 - January 2: Winter Break  
 January 12 - 16: Exam Week  
 January 16: End of 1st Semester  
 January 19: M.L. King Day - Schools closed  
 January 20: Non-Student Day

### Liberty Middle School PTA Reflections *The World Would Be A Better Place If.....*

The National PTA Reflections Program is an arts recognition and achievement program for students. The Reflections Program provides opportunities for students to express themselves creatively and to receive positive recognition for original works of art inspired by a pre-selected theme, while increasing community awareness on the importance of the arts in education.

Participation and appreciation for the arts is the Reflections Program's goal. Although the Reflections Program follows a "contest" format, winning is not be the emphasis.

"The 2014-2015 National PTA Reflections Art Program officially wrapped up in Hillsborough county on December 8, On November 14, 2014 the following students were awarded for their artistry and creativity:

- Jacqueline Shaffer 1st place in Photography;
- Jadeen P. Pilger, Rose Tamang, and Chloe C. Bosche 1st, 2nd, and 3rd place in Visual Arts; and
- Tatiana Carter, Tabitha Moore, and Wilmar A. Guzman 1st , 2nd, and 3rd place in Film Production.

Their creative works of art were then sent on to the county level of the competition, where Tabitha Moore was awarded 2nd place in the county for her Anti-Bullying video.

The Liberty Family is very proud of Tabitha and all of the students who participated in this year's Reflections Program. The creativity and beauty of their art work gives us hope that art is alive and well in our schools and will be carried forward by this new generation of artists!





## CDD Supervisor Heads North

Andy Miller, long time CDD Board Supervisor, TPOA Director and Enclave voting rep resigned his many posts and waived goodbye to Tampa Palms. Flying the face of conventional wisdom, Andy has relocated to upstate NY.

Andy joined the CDD Board in 1992 and for more than twenty years was an active contributor to the Tampa Palms lifestyle. Andy's particular passion was the Tampa Palms parks, for which he provided oversight. The Tampa Palms family wishes Andy well!



## CDD Adopts Camera Use Policy

Video cameras are in place at all the parks in Amberly and Hampton parks and at the CDD maintenance facility. The cameras are not "security" cameras and are not actively monitored.

The cameras are authorized for the purpose of improving information available to manage the CDD operations and to offer sufficient information to law enforcement regarding any criminal incidents that might occur.

The Board confirmed the purpose of the cameras and affirmed that *"any camera view will be no greater than what is available with unaided vision"*.

The local police have access to the camera systems.



## Tampa's Downtown On Ice Is Open

For a special holiday treat for the whole family the City of Tampa's holiday ice rink was opened by Mayor Buckhorn Nov 21st.



The rink is nestled between the Glazer Children's Museum and the new Museum of Art, and enjoys ample adjacent parking.

Admission is only \$10 per person which includes skates and a 90 minute skate adventure.

### Hours

Monday – Thursday from 4 p.m. – 9 p.m.

Friday from 4 p.m. – 10 p.m.

Saturday from 10 a.m. - 10 p.m.

Sunday from Noon – 9 p.m.

### Holiday Hours

Christmas Eve: 10 a.m.-4 p.m.

Christmas: 4 p.m.-10 .pm.

During Hillsborough County School Fall and Winter breaks, the hours of operation are 10 a.m.-10 p.m on Monday-Saturday and Sunday Noon-10 p.m.

The 4500 square foot rink is its fourth season and has become a popular holiday tradition in downtown Tampa. Tickets are \$10 and includes skate rental.

New for this year, ice skating lessons are available on Saturdays from 9 a.m. – 10 a.m. and Sundays from 10 a.m. – 11 a.m. Classes are \$25/30 minutes. The rink is also available for private parties and children's birthday parties,

Hurry, the rink closes Jan 4th.





## New Tampa Morning Rotary

The **Morning Rotary Club of New Tampa's** membership represents a cross-section of the community's business and professional men and women.

Membership in the Rotary Club of New Tampa provides the opportunity to become connected to your community.

We hope that you will take the time to join us at Tampa Palms Golf & County Club 5811 Tampa Palms Blvd. on Fridays at 7:00 AM.

YIRS, Frank Moore, President



### Up Coming Speakers

**December 19** - Dr. Suzanne Demers - Maximized Living

**December 26** - NO MEETING (Happy Holidays!)

**January 2** - Richard Crouse - Preclinical development staff scientist at Intezyne Technologies

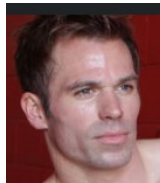
Topic- Rotoract . PolioPlus



**January 9** - Erin Stokes -American Cancer Society Relay for Life Specialist,  
Topic: Relay For Life



**January 16** - Kaj Gruning - Personal Trainer  
Topic: Physical Fitness - Health and Body Posture



The Rotary Club of New Tampa's membership represents a cross-section of the community's business and professional men and women. Membership in the Rotary Club of New Tampa provides the opportunity to become connected to the community, work with others in addressing community needs, and interacting with other professionals in the community.

New members are welcome. Club meetings are held Fridays at 7:00 a.m. at Tampa Palms Golf & Country Club. For more information, visit: <http://www.newtamparotary.org/>

### Community Director: Jo Ann Conrad Property Manager: Bonnie French

16101 Compton Drive M-F 9 AM - 5 PM

Phone: 977-3337

Fax: 978-8067

E-Mail: tpoamail@aol.com

Web Site: www.tpoa.net

#### Board of Directors

Bill Edwards, President 972-4238

Barbara Shimer, Secretary 971-8063

Marianne Trubelhorn, Director 977-3337

Ernie Munzen, Director 977-3337

#### CDD

16311 TP Blvd. West

Maggie Wilson, Consultant Phone: 977-3933

Fax: 977-6571

E-Mail: cdd.tampa@verizon.net

#### CDD Board of Supervisors

Gene Field (Chair) 977-1162

Patty Maney 977-7129

Jim Soley 222-3200

Jake Schoolfield 597-1432

Bill Shimer (Vice Chair) 971-8063

#### ABM/One Source (Landscaping )

Joe Laird, Project Manager 267-1756

#### Tampa Palms Parks

Compton Park 972-0897

Hampton Park 972-5699

River Park 971-6241

#### Police & Fire

**911**

Non-Emergency Police 231-6130

Non-Emergency Fire 223-4211

#### Local Schools

Tampa Palms Elementary 975-7390

Lawton Chiles Elementary 558-5422

Liberty Middle School 558-1180

Freedom High School 558-1185

#### Miscellaneous

Street Repairs 622-1940

TECO 223-0800

Progressive Waste Management 248-2820

Water Department 274-8121

New Tampa Rec Center 975-2794

Stormwater (Floods or **Dumping**) 622-1901



# December 2014 Calendar



SUN	MON	TUE	WED	THU	FRI	SAT
	1 9-11 Private Event 4-9 Private Event	2 1-4 TPWC Canasta 6-9 Chess Club	3 10-2 Private Event 6-9 Fly Fishing	4 10-2 Women's Club 4-9 Private Event	5 5-10 Private Event	6 11 AM - 4 Private Event 5-10 Private Event
7 9-12 Private Event 1-6 Private Event	8 9-11 Private Event 3:30-5:30 Private Event 6:30-8 Private Event	9 12-4 Private Event 6-9 Chess Club	10 12-4 Private Event	11 10-2 Women's Club Bridge 4-9 Private Event	12 1-4 Private Event 5-10 Private Event	13 11 AM - 4 Private Event 5-10 Private Event
14 9-12 Private Event 1-6 Private Event	15 9-11 Private Event 3:30-5:30 Private Event 7-9 Faircrest HOA	16 1-3 TPWC Board <b>5 PM TPOA Board Meeting</b> 6-9 Chess Club	17 10-12 Private Event 6-9 NT Art Group	18	19 10-3 Private Event 5-10 Private Event	20 5-10 Private Event
21 9-12 Private Event 1-6 Private event	22 9-11 Private Event	23 12-4 Private Event	24 <b>Christmas Eve Closed At Noon</b>	25 <b>Parks Closed</b> 	26	27 5-10 Private Event
28 3-8 Private Event	29 9-11 Private Event	30	31 <b>Closed At Noon</b> <b>NEW YEAR'S EVE</b>	<b>School Winter Holiday: December 22nd - January 5, 2015</b>		

## JANUARY 2015

New Years Day- <b>Jan, 1 All parks closed.</b>				1 <b>Parks Closed</b> 	2 5-10 Private Event	3 5-10 Private Event
Dr Martin Luther King Day <b>Jan 19- No School</b> 						
4 9-12 Private Event 2-7 Private Event	5 9-11 Private Event	6 9-11 Private Event 12-4 Private Event 6-9 Chess Club	7 10-12 Private Event 6-9 Private Event	8 10-2 TPWC Bridge 3:30-9 Private Event	9	10 5-10 Private Event
11 9-12 Private Event 1-6 Private Event	12 9-11 Private Event 3:30-5:30 Private 6:30-8 Private	13 9-11 Private Event 12-4 Private Event 6-9 Chess Club	14 10-12 Private Event <b>6-9 CDD Meeting</b>	15	16	17 10-3 Private Event 5-10 Private Event
18 9-12 Private Event	19 <b>No School</b> 9-11 Private Event 3:30-5:30 Private 6:30-8 Private	20 9-11 Private Event 1-3 TPWC Board 6-9 Chess Club	21	22 10-2 TPWC Bridge 5-9 Private Event	23 8-1 Private Event 1-5 Private Event 5-10 Private Event	24 5-10 Private Event
25 9-12 Private Event 2-7 Private Event	26 9-11 Private Event 7-9 Faircrest HOA	27 9-11 Private Event 12-4 Private Event 6-9 Chess Club	28 10-12 Private Event 6-9 North Tampa Arts	29 <b>7 PM TPOA Annual Meeting</b>	30	31 11-4 Private Event

## **Tampa Palms CDD Meeting Agenda**

**January 14 at 6:00 p.m.**  
**Compton Park Recreation Building**  
**16101 Compton Drive, Tampa, FL 33647**

1. Roll Call
2. Strategic Planning
3. Public Comments
4. Board member Discussion items
5. Consultant Reports  
BB Downs Updates  
Park Improvements  
Landscape Reviews
6. Public Comments
7. Board member discussion items.
8. Adjourn

## **The Artists Within Shine**

We are proud to announce four winners at this year's *Reflections* PTA Hillsborough County event.

- Sharianne Sampson, 3rd grade won first place for Dance Choreography, Intermediate Division.
- Raquel Conner, also 3rd grade, received an Honorable Mention in Film Production, Intermediate Division,
- Mohini Mahajan, 2nd grade received an Honorable Mention in Literature, Primary Division, and
- Mustafa Hani Odeh, 5th grade received an Honorable Mention in Literature,

The First Place Winner for the Intermediate Division, Sharianne Sampson, will compete at the next level of judging, the State of Florida Reflections PTA.

(Pictured with Co-Reflections Chair Allison Zager).

