



TAMPA PALMS NEWSLETTER

February - March 2025



Water-Wise Landscaping TPOA Community Workshop April 26th



In This Issue

**Home Improvement
Time Is Here**
Page 2

**Time Change Coming
March 9th**
Page 2

**TPWC Yard Sale &
Lots More**
Page 3

**Sustainability & Your
Pocketbook**
Page 4

Ponds & Sinkholes
Page 5

**Councilman Viera's
Town Hall 2025**
Page 6

E-Bikes & More
Page 7

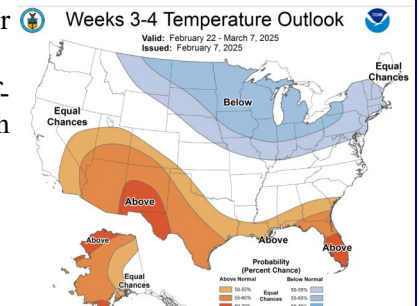
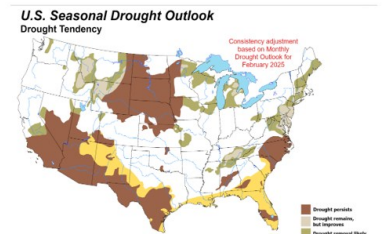
Dogs & Leashes
Page 8

FAQ For TPOA
Page 9

Tampa Palms Provides a Free Community Workshop

Times are changing, and Tampa Palms steps in to help neighbors adjust to warmer summers, limited irrigation permitted and the rising costs of water needed to maintain lush landscapes. The challenges to keeping an upscale look are increasing:

- NOAA's Climate Prediction Center is forecasting below normal rainfall and higher than normal temperatures.
- The City of Tampa has instituted year-round irrigation restrictions that permit only once per week watering.
- The cost of City of Tampa water, which is used by most for irrigation increased by 11% for this year and will increase another 11% next year.
- There are no credible plans to provide reclaimed water in the New Tampa area in even the distant future.
- More than 60% of the lawns in Tampa Palms are suffering from hurricane damage and the effects of high humidity and cloudy weather.
- The cost of lawn replacement is substantial.



Beautiful Yards, Smaller Water Bills Professional Seminar April 26, 2025 Compton Park, Palms Building Begins 10 AM



Jason Rinard, principal landscape architect for Pemmoni, who led the team which created the Tampa Palms entry and village monuments and Phase I of the Compton Park improvements will deliver the program.

Some of the highlights will include a focus on the best plant options to keep the upscale look that Tampa Palms owners demand, while minimizing the needs for fertilizer, irrigation and pesticides.

The focus will be on sustainable landscape that will be good for Tampa Palms residents, good for the community and very important, good for the wallet.

News From the TPOA

The New Year In Tampa Palms Brings Home Improvements

Owners making improvements to their homes often call the TPOA to determine when and if they need to submit and RMC request.

Only changes that affect the exterior of the home require pre-approval from the TPOA.

Per the TPOA governing documents (Article XI) all outdoor modifications, including landscape changes, should be approved by the TPOA using a simple form found on-line or available at the Compton Park offices of the TPOA.

Information and the RMC form can be found on-line at <http://www.tpoa.net/RMC.html>.

Another frequent question involves Porta-Potties and if they are allowed. The answer is yes. In part this is because that for some interior reconstruction that involves removal of bathrooms, the City of Tampa requires porta-potties by the City permit.



Remember No Vendor Signs Displayed



Often, contractors and other service providers doing work at a home in Tampa Palms will attempt to advertise their services by placing signs in a homeowner's front yard or on the right-of-way (ROW) in front of the owner's home.

Signs advertising services and products are not allowed in Tampa Palms. There are a few signs that residents can display that are automatically approved:

- A single **For Sale** or **For Rent** sign is allowed in front of a home but not on the ROW.

During election season a single political sign in support of a cause or a political candidate.

Day Light Savings Time Means Set Your Timers

Daylight Savings Time returns Sunday, March 9th.

Residents are reminded to check irrigation timer settings with the time change .



Once per week watering is permanent.

Address Last Number	Watering Day
0 or 1	Monday
2 or 3	Tuesday
4 or 5	Wednesday
6 or 7	Thursday
8 or 9	Friday
No fixed street address such as cul de sacs.	

Hand Watering

Hand watering and micro-irrigation of landscapes, such as flowering plants, vines, shrubs, palms, trees, ornamental grasses and groundcover (other than lawn / turfgrass) is allowed any day and any time.

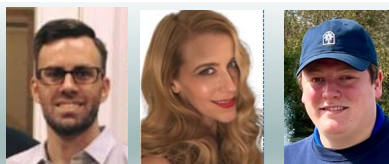


Hand watering of lawns is restricted to the designated day and time.

All hoses must be fitted with an automatic shut-off garden hose nozzle.

Tampa Water Department customers can request a free outdoor water conservation kit which includes this nozzle. For more information go to <https://www.tampa.gov/water/conservation/watering-days-and-hours>

The Tampa Palms



Professional Staff



Tampa Palms Women's Club Busy As Usual



A Fun Time On A Saturday Morning

This year the Tampa Palms Women's Club is returning to hold what can only be described as a **Great Afternoon** and a **Superb Service** to Tampa Palms by holding a community wide yard, bake sale, and vendor craft sale.

At Compton Park you can shop for something awesome all the while enjoying a lovely day in the park and do so for a great cause. (The TPWC Scholarship Fund).

Community yard sales are safer than holding one in a neighborhood garage or even a driveway, both of which effectively open the seller's home - and even the whole neighborhood - to strangers who can walk around and "check out" things.

If you want to sell, information with complete instructions and an application are conveniently located online at the TPOA.net website. <https://tpoa.net/2025YardSale.pdf>



Saturday, March 15th [9AM to 1 PM] Compton Park

The 2025 Board and Officers Installed

Last month the membership installed the 2025 Board and Officers at their annual installation luncheon.

THE 2025 TPWC OFFICERS:

- President:** Stella Hardman
- Vice-President:** Bettye Newman & Paula Burke
- Secretary:** Karen Howell
- Treasurer:** Judy Alkow
- Membership:** Pam Fahey & Liz Burns
- Charities:** Nancy Yetter
- Senior Advisor:** Helen Pepper

STANDING COMMITTEES:

- Newsletter Editor:** Stella Hardman
- Public Relations:** Brandy Angelilli
- Sunshine & Mother Goose:** Hallie Rice
- Scholarship:** Hoa Daniel

AD HOC COMMITTEES:

- Fashion Show:** Judy Alkow & Stella Hardman
- Yard Sale:** Stella Hardman

Looking Ahead To The Show of the Year

On April 24th, for the thirty-third year, the Tampa Palms Women's Club will create a fashion extravaganza that pairs great friends, delightful ambiance, good food, and chic fashions with a fund-raising event for the benefit of deserving individuals in Tampa Palms and the greater community.

The TPWC Fashion Show is a must-see every year and 2025 promises to be another hit!

Tampa Palms Women's Club
present Fashion Show 2025

"FASHIONS BY CANDLELIGHT" THURSDAY, APRIL 24, 2025

Where: Tampa Palms Golf and Country Club

Fashions: Accessories and More

Time
 10:15 Doors open Raffle sales begin
 11:00 Live Auction with proceeds to OASIS
 11:30 Fashion Show
 12:00 Luncheon
 Tampa Palms Salad topped with grilled chicken
 Rolls
 Lemon Cake

Raffle winners will be announced during dessert.

R.S.V.P. NO LATER THAN THURSDAY, APRIL 17, 2025

Any questions, please email us at tpwcf@gmail.com

**\$40 per person. Please make check payable to Tampa Palms Women's Club
Amount enclosed \$ _____ Mail to TPWC Fashion Show P.O. Bx 47971, Tampa, FL 33646**

If at Oasis table, blacken - 0

Name _____ Phone _____

Name _____ Phone _____

Name _____ Phone _____

Name _____ Phone _____

Dietary restrictions or Physical concerns _____

* Please include your e-mail address if receipt is desired





Sustainability In Tampa Palms

Good For The Environment & Pocketbook



Recycling - Helps Scale Down Owner Costs

Recycling protects the environment, reduces the amount of landfill area required for solid waste but just as important, produces revenue from the sale of the recyclables which moderates the rising costs of collection and disposal.

Mountains of recyclables are sorted at a material recovery facility (MRF) by workers and systems, such as magnets, optical scanners and screens., then bundled and sold.



Permitted In The Blue Recycle Container



- All plastic bottles and metal food containers that should be emptied of food residue and liquids.



- Aluminum beverage cans emptied of all liquids are recyclable in the blue cart. Large aluminum food trays and pie tins free of food residue can also be recycled.



- Glass containers of food and beverages can be recycled. For the safety of the workers and machinery, they should be emptied of all liquid residue .



- All paper that is clean, dry, and easily tears is recyclable. Recyclable paper includes magazines, newspaper, construction paper, office paper, envelopes (even with the plastic windows), paperback books, flattened boxes and even the glossy paper

Tips On Reducing Waste

According to Hillsborough County Solid Waste (providers of the garbage and recycle collection for all of Tampa Palms) the most effective way to reduce waste is to not create it in the first place.

Making a new product requires a lot of materials and also energy and there are environmental impacts along the way.

Reduction and reuse are the most effective ways to save natural resources, protect the environment, and reduce the escalating costs of collection and disposal each resident pays.



Small Tips To Help Reduce Waste Production

- Go paperless by having bills and receipts emailed.
- Buy items in bulk that use less packaging.
- Stop buying single-use items such as plastic or paper plates, cutlery, straws, and cups.
- Bring reusable bags with you when you go shopping.
- Use a reusable water bottle with you whenever you go out.

Protecting Tampa Palms Pond Banks

Tampa Palms Neighborhoods The Land of 70 Ponds

Tampa Palms enjoys seventy stormwater ponds which serve as an amenity to the owners who live along them but are far more important as a required structure to:

- Filter out the pollutants before they reach the wetlands, groundwater, estuaries or even the Hillsborough River.
- Store stormwater and protect against roadway flooding.

To keep the banks attractive and reduce the opportunities for erosion, FDEP has some suggestions for pond bank living.

1. Do not empty excess pool water directly into the ponds. Pool water can kill the grass on the ponds edge and create erosion. Pool drainage should flow forward to the road and be carried by the drains to the ponds as defined in the drain plans of the Tampa Palms homes.
2. When the ponds are low, as they have been for the last six months, do not walk on the exposed banks.
3. Sod is one of the best allies when it comes to dispersing water and minimizing the chance of erosion. Maintain and/or replace worn sod or areas that are thinning.

Never pour or allow workers at your home to pour oils, paints or other chemicals directly into stormwater drains. The drains are direct conduits to the stormwater ponds and the ponds can be damaged.



If anyone is observed dumping anything into the stormwater drains, please call the CDD at 813 977-3933 or the City at 813 274-3101 to report it.



Sinkholes In Tampa Palms?

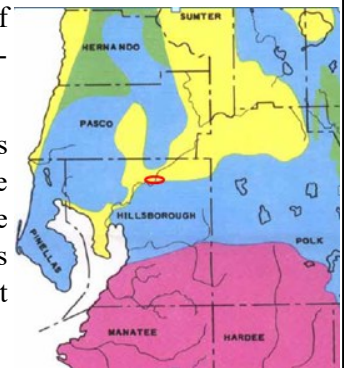
Most Of Florida Has Sinkholes But The Types & Risks Vary

New residents and prospective residents of Tampa Palms often ask about sinkholes and want to know if Tampa Palms is in a danger spot.

Sinkholes are natural and common geologic features that occur when the underlying rock is water soluble. Much of the area has limestone below the surface which is highly susceptible to being dissolved by water, resulting in sinkholes.

There are many types of sinkholes, from the cover-collapse to simple settling.

The map to the right shows Tampa Palms and the different areas of sinkhole risk. A full version of this map can be viewed online at <https://heliconusa.com/resources/florida-sinkhole-map>



- AREA I.** Thinly covered Limestone. Sinkholes are few and shallow. Solution sinkholes dominate
- AREA II.** Cover 30 to 200 feet thick. Sinkholes are few, shallow, small diameter. Cover-subside sinkholes dominate
- AREA III.** Cover 30 to 200 feet thick. Sinkholes numerous of varying size, and develop abruptly. Cover-collapse sinkholes dominate
- AREA IV.** Cover more than 200 feet thick. Sinkholes are very few, with large diameters. Seep sinkholes occur. Cover-collapse sinkholes dominate

The good fortune for Tampa Palms, according to USGS mapping, is that Tampa Palms lies in an area where the geological formations are such that sinkholes are less likely to form and those that do form, tend not to be the cover-collapse type that receive such media attention.

Questions about insurance coverage in the case of sinkholes should be referred to the owners insurance agent.

Citizen's, the Florida Not For Profit insurer, notes on their web page that as an optional endorsement, sinkhole insurance is available. They also make it clear that only total loss and government condemnation from a *Ground Cover Collapse* is included on a standard policy. One should check their insurance provider but the Citizens web page provides useful information to start the conversation. <https://www.citizensfla.com/sinkholes>

Councilman Viera's First 2025 Town Hall

**Taking It To The People
March 3, 2025**

From sidewalks to paving, (or lack thereof such, as is Tampa Palms Blvd west of BB Downs or Highwoods Preserve), to congested intersections such as Cross Creek / New Tampa Blvd and BB Downs, and even crime, it is a fact that the Councilman never avoids a question.

Please join Councilman Viera and members of the City Staff:

**Tampa Palms Compton Park (Palms Building)
16101 Compton Dr.
March 3, 6 PM**

**PLEASE JOIN TAMPA CITY
COUNCILMAN LUIS VIERA FOR A
NEW TAMPA COMMUNITY MEETING**



WHAT: Community meeting with Tampa City Councilman Luis Viera. Come for an update on what is happening in New Tampa.

WHEN: March 3, 2025 at 6:00 PM.

WHERE: 16101 Compton Drive, Tampa, Florida 33647



SEE YOU THERE! Questions? Email: luis.viera@tampagov.net

Please note that the Compton Park buildings are very user access friendly with ramps, automatic doors and more but if any special accommodations are needed, please contact Dasch Bergmann at 813 977-3337 without hesitation.

It's Almost Biting Season Protect Yourself

**Mosquito Season Is Early This Year &
The Little Devils Are Out**



Limited winters and early springs always produce what seem to be a bumper crop of mosquito's. They are making an appearance this year even in February.



They are annoying, certainly and also worrisome to the many who have concerns for themselves or their children.

The bites can hurt but the real concern for many is for the diseases that mosquitos transmit include: zika, west Nile, dengue virus.

Remove Mosquito Habitats

- Get rid of standing water in flowerpots, rain gutters, plastic grill covers, toys or any other container where mosquitoes can breed.
- Treat plants like bromiliads with a granular B.T.I. (Bacillus thuringiensis israelensis) or methoprene, which can be sprinkled into the plants every three weeks.
- Wash out bird baths and fountains frequently.

Protect against Bites

- Make sure window screens are in place
- Check lanai screens for holes.
- Check doors, especially lanai screen doors for gaps.
- Wear long sleeves when working in the garden
- Use a personal mosquito repellent

Plant Mosquito Repellent Plants

Adding a few mosquito-repelling plants to your yard will sometimes aid in keep mosquitoes away. Most of these plants are herbs and have some effect in repelling the little biters thanks to their strong scents

- ✓ Basil
- ✓ Peppermint
- ✓ Rosemary
- ✓ Lavender
- ✓ Garlic
- ✓ Sage



Road & Sidewalk Safety In Tampa Palms Gets More Complicated Every Day

Tampa Palms' Four Lane Curving Boulevards Require Caution

The variety of “vehicles” sharing the roadways, the sidewalks and the multi-modal path in Tampa Palms has increased in the last few years to include in addition to the standard bicycles, motorcycles and mopeds, the following:



- E-Bikes
- Hoverboards



It is the E-Bike that has in recent years taken Florida, and the entire nation, by storm. These sleek and eco-friendly two-wheelers have become a favorite mode of transportation for many, offering a convenient and environmentally conscious alternative to traditional bicycles.

Florida laws define E-bikes as “bicycles equipped with fully operable pedals and an electric motor of less than 750 watts (1 horsepower)”. E-bikes are categorized into three classes:

- Class 1: Pedal-assist, with a maximum speed of 20 mph.
- Class 2: Throttle-assisted, with a max speed of 20 mph.
- Class 3: Pedal-assist, with a maximum speed of 28 mph.

E-bikes are a favorite with many parents because of both their legal treatment as bikes and their low cost.

- **Licensing & Registration.** Not required
- **Helmets :** Helmets required for riders under 16 y/o.
- **Allowed Use:** E-bikes are allowed on streets, bike lanes, sidewalks and multi-modal paths.
- **Speed:** Depends on the Class, which must be displayed on the e-bik.

The Fla laws governing E-bikes are in FS 316.20655 and parents in particular are encouraged to check from time to time to see if requirements change.

Hoverboards and Segways are considered “*Personal Mobility Assistant Devices*” under Florida law (FS 316.2068). They are two wheeled devices in many shapes and sizes.

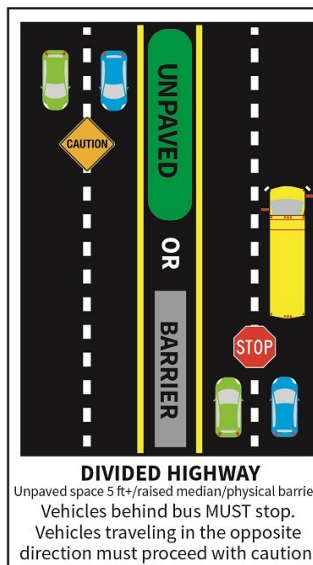
Licensing and registration are not required and they may be used on the bike paths, sidewalks, and on roads with speed limits less than 25 MPH, except at intersections. This eliminates use on the spine roads (boulevards) in Tampa Palms as these have speed limits of 35 or 40 MPH.



Tampa Palms is a vibrant community with a whole lot of families with children.

Excited children are at particular risk from traffic hazards before and after school starts; this is especially true in the area of both elementary schools [TPE & Chiles] which are located on four-lane Tampa Palms Blvd.

Please be cautious in these areas and obey the crossing guards who are there to protect everyone.



The rules concerning stopped school buses occasionally confuse drivers due to the medians along Tampa Palms Blvd.

Essentially the law is that any vehicles behind a stopped school bus with its red lights flashing must stop.

Vehicles traveling on the opposite side of the medians from the stopped bus are not required to stop.

In Tampa Palms there are breaks in these medians so at these breaks it makes sense to stop until the bus turns off the red lights.

There are questions and complaints about golf carts on the paths. Per the City of Tampa, golf carts are not permitted on public ROWs Per the City attorney.



City of Tampa Code Sec. 14-55 states that golf carts are permitted on public roads on Davis Islands. There are no other exceptions in the city except for golf courses and crossing the street to get from one side of the golf course to the other.

Unfortunately some treat this law the same way some drivers in Tampa Palms treat speed limits, as optional.



Dogs Must Be Leashed

Safety For The Dogs & It's The Law



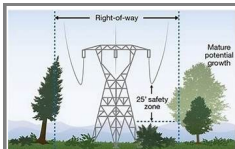
Tampa Palms is a very dog-friendly community. Dogs are welcome along the sidewalks and paths and in the five parks but all dogs **MUST** be on a leash at all times.

No matter how sweet and well trained your pooch is, don't allow him / her off the leash anywhere outside your home..

The Hillsborough County ordinances, which are enforced by Animal Control, as well as the Tampa Palms governing documents (below) make this clear.

Dogs which are household pets shall at all times whenever they are outside a Unit be confined on a leash held by a responsible Person.

This is for the protection of everyone, the dogs, children, and even adults.

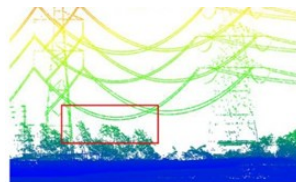


Hearing Chain Saws?

It is not your imagination. Duke has a tree management company trimming any trees that have even the capability to grow to impact their high voltage lines.

The FERC has stringent rules for the power companies relative to making certain that the power grid, especially as it relates to transmission lines, is secure.

It is not just *box checking*; the power companies are required to aerial survey [Lidar] and provide proof that trees or plant growth cannot affect the connectors.




If not in compliance, the companies can be fined. This applies to both Duke Energy and TECO.

Poisonous Snake Cautions

Be Careful Of All Snakes

Tampa Fire Rescue warns that at this time of year with alternating chilly / warm temperatures there is a greater chance of "running into" a poisonous snake sunning on paths or along pond banks. If bitten, **SEEK HELP IMMEDIATELY!**

For more information and to view pictures of the most common local snakes go to <http://www.tpoa.net/Snakes.pdf>

DON'T	DO
Don't place ice on wound	Immobilize area of bite (foot/leg/arm) if possible
Don't use a tourniquet	Keep bite lower than heart
Don't cut the bite area	Remove any tight clothing or jewelry and wash area
	Be prepared for shock.



Nothing But Rain In The Drains

Storm Drains Protect Against Street Flooding

Bottles, cans, and other trash contribute to clogging the stormwater systems and ultimately cause slow drainage from streets.

It is a common misconception that storm drains lead to a wastewater treatment facility. The storm water flows to the stormwater retention pond here in Tampa Palms and then into the waters of Fla such as the Hillsborough River or Cypress Creek.

Nutrient rich leaves carried to the ponds and rivers can foul the water and cause algae blooms. It is for that reason - as shown on the City poster below- leaves should not be blown to the street.

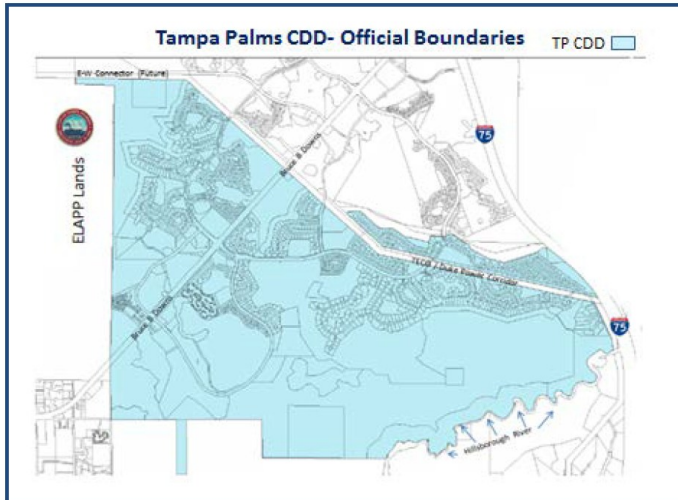




A Few Questions Tampa Palms Residents Have Recently Asked the TPOA



What is “Tampa Palms” and what is not? The name seems to appear on several communities.



The name “Tampa Palms” was applied to the Development of Regional Impact (DRI) for the area in the very early 1980’s. DRI’s often include many communities, example the DRI for Hunters Green also included Arbor Greene and they are different communities.

Tampa Palms is trademarked for the TPOA. It does not include Tampa Palms North or TPOST 3, who use the name on their entry monuments with TPOA permission. These are lovely communities, separately developed with separate amenities.

Tampa Palms also does not include the power corridor which separates it from Tampa Palms North and portions of TPOST 3 and turns south and runs through a portion of Tampa Palms.

How was the park space and number of parks in the general Tampa Palms / New Tampa area allocated?

The DRI’s (mentioned above) established the size (acres) of park lands based on the allowed development of housing units for each area. For instance, Tampa Palms, which has been built-out for more than twenty-five years, has slightly more than 4,000 housing units. The five parks in Tampa Palms support that number (estimated 6,500 residents).

During the initial period when New Tampa was developed, each individual community developed (and paid for) through developer funds, bonds and assessments, the parks for their population sizes.

This is true for communities throughout New Tampa from Tampa Palms to West Meadows, to Richmond Place to Arbor Greene to Cory Lake Isles and more. Most other communities have far fewer housing units so fewer or smaller park spaces.

This was done in part because the developers wanted to make certain that there would be sufficient park space to serve the individual communities and attract buyers. In turn the City developed a magnificent regional park in Tampa Palms North, as well as, the nearby Nature Park; The County provides the Performing Arts Center and Flatwoods Park.

Does the TPOA have responsibility for the safety of the roads, curbs, or sidewalks in Tampa Palms?

The short answer is no. The governing documents of the TPOA do not accept responsibility for public property.

The preponderance of rights-of-way (ROWs), which include paving, curbs, stormwater drains and sidewalks, in Tampa Palms are public [non-gated] and belong to the City of Tampa, which has a robust program to keep them in safe repair.

For repairs from potholes to sidewalks, you can go online and report the problem to the City (<https://www.tampaconnect.com/CRM/s/>)



For private rights-of-way that exist in the gated villages, such as the Reserve, Sanctuary etc, the sub-associations (which own the rights of way) have responsibility, not the TPOA.



The Tampa Palms Country Club

Drop In To Your Club
There Is A Lot Happening



FAMILY PASTA NIGHT

Family Pasta Night | Every Wednesday | 5 PM - 9PM



PRIME RIB NIGHT

Prime Rib and French Dip Night | Every Thursday | 5 PM - 9PM



FRIDAY BREWS

Friday Brews | Every Friday | 3:00p.m. - 6:00p.m.



Community Director: Brian Koerber
Community Liaison: Leslie Caruthers
Parks Supervisor: Michael (Dasch) Bergmann

16101 Compton Drive M-F 9 AM - 5 PM
Phone: (813) 977-3337
Fax: (813) 978-8067
E-Mail: tpoamail@aol.com
Web Site: www.tpoa.net

Board of Directors

Tracy Falkowitz, President (813) 977-3337
Maggie Wilson, Vice President (813) 977-3337
Jodi Pecoraro, Director (813) 977-3337
Debbie Libertiny, Secretary (813) 977-3337
Don Oneal, Treasurer (813) 977-3337

CDD

16311 TP Blvd. West
Maggie Wilson, Consultant
Phone: (813) 977-3933
Fax: (813) 977-6571
E-Mail: cdd.tampa@verizon.net

CDD Board of Supervisors

Gene Field (Chair) (813) 977-1162
Greg Horvath (813) 977-3933
Tracy Falkowitz (813) 977-3933
Richard Diaz (813) 977-3933
Don Oneal (Vice Chair) (813) 977-3933

ABM (Landscaping)

Joe Laird, Project Manager (813) 267-1756

Tampa Palms Parks

Compton Park (813) 972-0897
Hampton Park (813) 972-5699

Police & Fire

911

Non-Emergency Police (813) 231-6130
Non-Emergency Fire (813) 223-4211

Local Schools

Tampa Palms Elementary (813) 975-7390
Lawton Chiles Elementary (813) 558-5422
Liberty Middle School (813) 558-1180
Freedom High School (813) 558-1185

Miscellaneous

Street Repairs (813) 274-3101
TECO (813) 223-0800
Hillsborough County Solid Waste (813) 272-5680
Water Department (813) 274-8121
New Tampa Rec Center (813) 975-2794
Councilman Viera (813) 274-7073
Commissioner Hagan (813) 272-5452
EPC (Report Dumping) (813) 627-2700



February, 2025 Calendar



SUN	MON	TUES	WED	THURS	FRI	SAT
Food Truck Friday Friday February 28!!!! Starts 5 PM						1 10 AM Private (2) 5 PM Private
2 8 AM Private Event 1 PM Private Event 2 PM Girls Scouts 5 PM Boy Scouts	3	4 10 AM Private 4 PM Private	5 9 AM Private	6 9 AM TPWC 4 PM Private (2)	7 8 AM Private (2) 2 PM Private (2)	8 10 AM Private (2) 5 PM Private (2)
9 Daylight Savings 8 AM 3 PM Boy Scouts	10 4 PM Private Event	11 10 AM Private 4 PM Private 5:30 Sterling Manor	12 6PM CDD Meeting	13 10 TPWC Bridge 4 PM Private	14 Valentines Day 10 AM Olli Classes 5 PM Private	15 10 AM Private (2) 1 PM Private Event 5 PM Private (2)
16 8 AM Private Event 3 PM Girls Scouts	17 Presidents Day 9 Private Event 5 PM Covenants Mtg	18 9 AM Private 11 AM TPWC Board 4 PM Private	19 10 AM Sanctuary 11 AM Olli Learning 4 PM Private (2)	20 10 TPWC Event 4 PM Private 6 PM Private	21 4 PM Private Event 6 PM Private Event	22 10 Private Event (2) 4 Private Event 5 Private Event
23 8 AM Private 2 AM Private 3 PM Boy Scouts	24	25 9 AM Private 1 PM Olli Learning 4 PM Private	26 4 PM Private Event	27 10 TPWC Bridge 4 PM Private (2)	28 5 PM	Mar 1

MARCH, 2025

	1					1 5 PM Private Event (2)
2 9 Private Event 3 Private Event 3 Girl Scouts	3 City of Tampa Town Hall Meeting 6 PM	4 10 AM Private Event 4 PM Private Event	5	6 9 AM TPWC 4 Private Event	7 5 PM Private Event	8 10 Private event (2) 5 Private Event (2)
9 9 Private Event 3 PM Boy Scouts 3 Private Event	10	11	12 6 CDD Meeting	13 10 TPWC Bridge 4 Private Event (2)	14 10 Olli Classes 5 Private Event	15 TPWC Yard Sale 9 Am -1 PM 5 Private Event (2)
16 8 Private Event 3 PM Private Event 3 Girl Scouts	17 Spring Break 5 PM Covenants Mtg	18 Spring Break 10 AM Private Event 11 AM TPWC Board 4 PM Private Event 6 PM TPOA Board	19 Spring Break 10 AM Sanctuary 4 PM Private (2)	20 Spring Break 4 Private Event 6 Private Event	21 Spring Break	22 5 Private Event
23 8 Private Event 3 Private Event 3 Boy Scouts	24	25 9 AM Private 1 PM Olli Learning	26 4 PM Private (2)	27 10 TPWC Bridge 4 Private Event	28	29 5 Private Event
30 8 Private Event 3 PM Private Event 3 Girl Scouts	31	March 3 Town Hall Meeting Compton Park 6 PM March 17 -21 Spring Break For Schools				



Tampa Palms Owners Association
16101 Compton Drive
Tampa, FL 33647



Tampa Palms CDD Meeting Agenda

**March 12th at 6:00 p.m.
Compton Park Recreation Building
16101 Compton Drive, Tampa, FL 33647**

1. Roll Call & Opening
2. Strategic Planning
4. Public Comments
5. Board Member Discussions
6. Project Updates
 - Around the Neighborhoods
 - Modeling Tampa Palms Future
 - Park Updates
 - CDD Annual Calendar
7. Misc. Board Business
8. Public Comments
9. Board Member Discussions
10. Adjourn

Protecting The Water & Protecting Our *Protected Species*

Did you know that Tampa Palms is home to many protected species?

The Tampa Palms community (the TPOA and CDD) maintains a robust program to protect the local waters of and does so under a NPDES Municipal Separate Storm Sewer Systems (NPDES MS4) permit which is administered by the Fla DEP.

The purpose of these protections of the public waters and environments is in part to safeguard the many species of wildlife present in the Tampa Palms area, particularly those which are endangered. There are many levels of "protected"

- Federal Endangered,
- Federal Threatened,
- State Threatened, or State Species of Special Concern.



For more information you can go online to ***Eco-Friendly Tampa Palms*** online at <http://www.tpoa.net> for a guide to the Protected Species of Wildlife in Tampa Palms.