

**Tampa Palms CDD
FY 2015-16 Budget Hearing &
Board Meeting
July 13, 2016**



Agenda

- Roll Call / Pledge of Allegiance
- FY 2016-17 Budget Hearing
- Board Member Discussion Items
- Public Comments
- Consultant Report
- Other Business
- Public Comments
- Board Member comments
- Adjourn

Budget Hearing Process

1. Convene Public Budget Hearing
2. FY 2015-16 Budget
3. Public Input
4. Board Review & Approval
5. Adjourn Public Budget Hearing

FY 2016-17 Budget

- Leadership Agenda
- Context
- Budget Particulars
 - Revenue
 - Expenses
 - Project Agenda

Leadership Agenda

Provide timely and effective leadership to protect and preserve the safety and quality of life in Tampa Palms, mitigating the impact of externally-driven changes.

Leadership Agenda

Externally Driven Challenges

Focus On Influence (2009- 2014) **Complete**

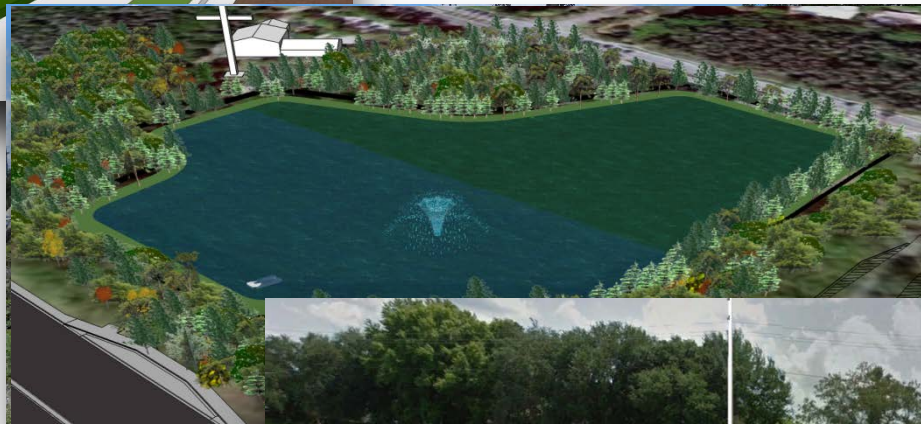
- Minimize Impact
- Cost Avoidance

Provide Mitigation (2015-2018) **Underway**

- Improvements
- “Signature 2017”

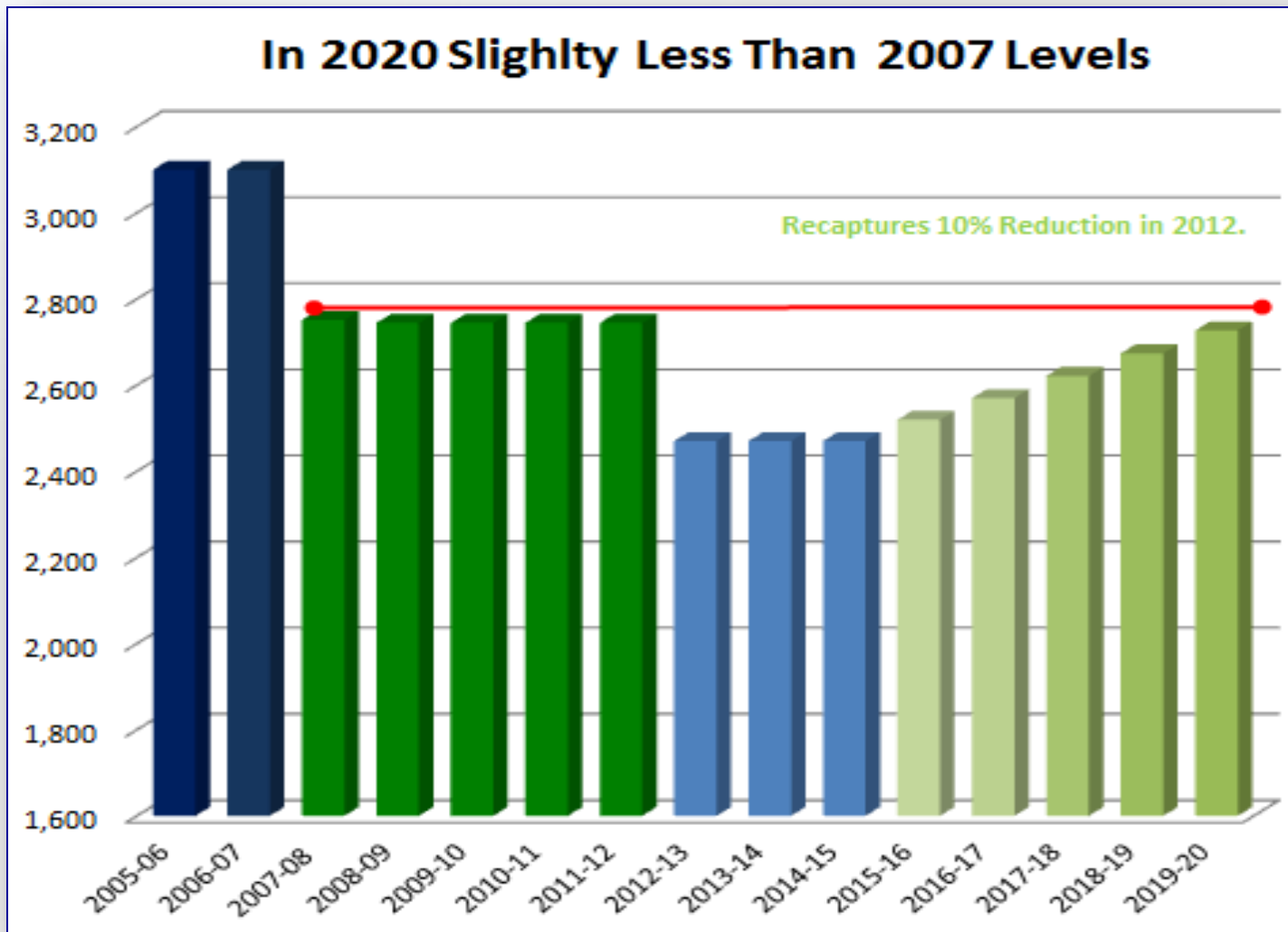
Leadership Agenda

Mitigation & Restoration



Leadership Agenda

Stewardship Profile



Budget Particulars

Revenue

FY 2016-17 vs Prior Year

	FY 2015-15	FY 2016-17	\$ INCR (DCR)	% INCR (DCR)
	Adopted	Proposed	VS 2015-16	VS 2015-16
NET REVENUE ALL SOURCES				
(\$000)				
	\$2,430	\$2,478	\$48	2%

Budget Particulars

Revenue

- **Assessment Revenue** - Increase by 2%
- **Owner Assessments** - 2% applied on a prorata basis

Budget Particulars

Normal Operations

			\$ INCR	% INCR
	FY 2015-16	FY 2016-16	(DCR)	(DCR)
			VS	VS
(\$000)	Adopted	Proposed	2015-16	2015-16
TOTAL EXPENSE	\$1,951	\$1,973	\$22	1.1%

Budget Particulars

Expenditures

Normal Operations Increased 1.1%

Performing Favorable To 5-Year Model Due:

- Economics Of The ABM Agreement
- Power Savings Due To LED Lighting
- Reduced Utility Expenses

Budget Particulars

Project Driven Expenses

Project Driven

	FY 2015-16		FY 2016-17	
	Adopted	Proposed	\$ INCR (DCR) VS 2015-16	% INCR (DCR) VS 2015-16
TOTAL EXPENSES	\$478	\$504	\$26	5.5%

Budget Particulars

Project Driven Expenses

Project Expenses Increased by \$26 K or 5.5%

	2015-16	2016-17	Incr	% Incr
- Signature TP 2017	\$78	\$79	\$.7	.1%
- Renewal and Replacement	175	188	13	7.5%
- Capital Projects	175	188	13	7.5%
- NPDES/Clean Water	50	50	0	0%

Project Agenda

Renewal & Replacements



\$188 K

Ongoing Revitalization

- Tree Removals & Trimming
- Cul de Sac Improvements
- Entry Median Displays
- Building Improvements



Keeping Tampa Palms New



Project Agenda

Capital



\$188 K

Programed Improvements

- Park Canopy
- Pond Structures
- Replacement Trees (Major)



Keeping Tampa Palms New



Project Agenda

Signature Tampa Palms 2017

\$ 75 K

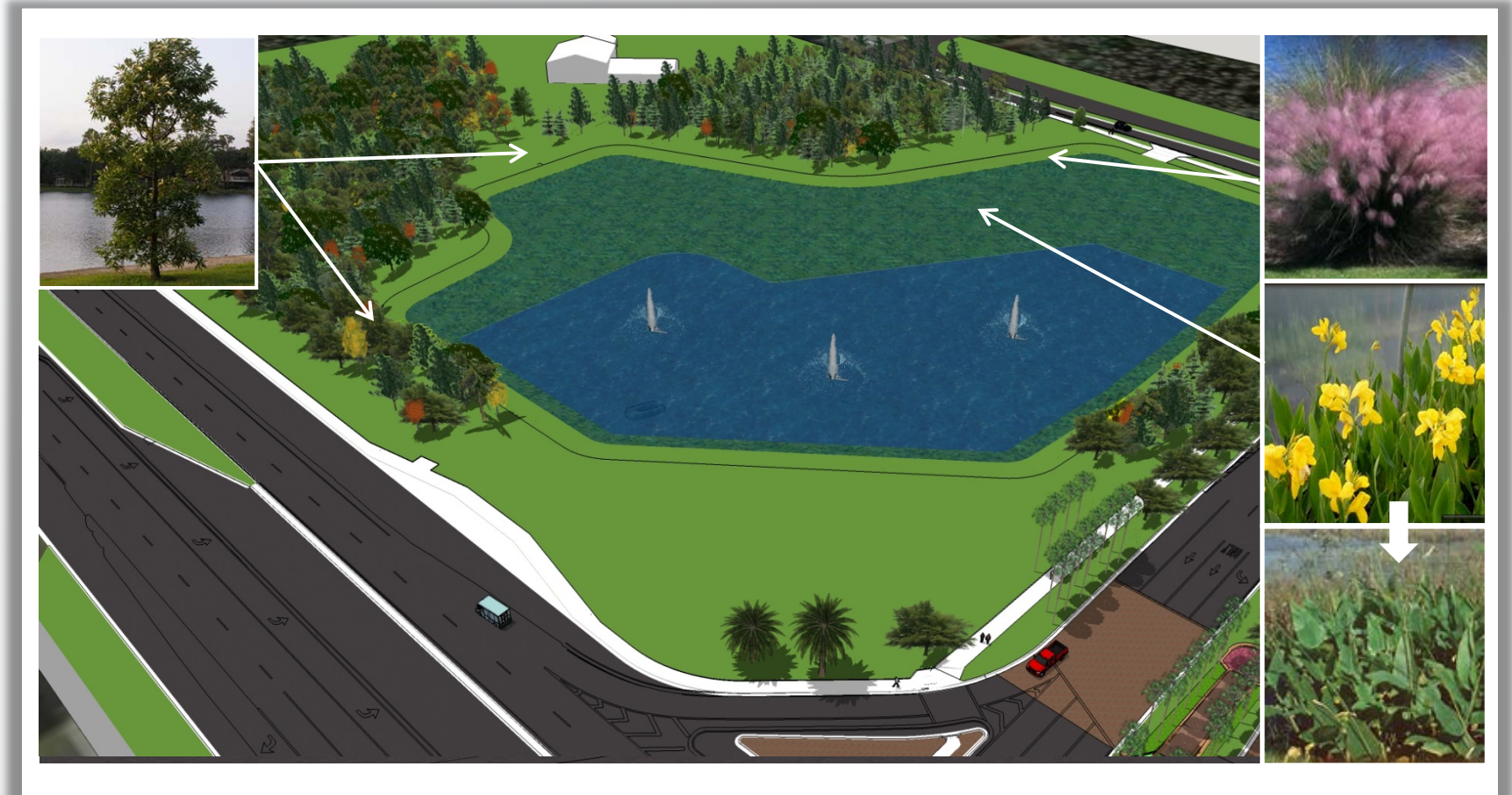
Damage Mitigation

- Area 1 Entrance
- Area 2 Pond
- BB Downs Path
- Amberly Entrances

Keeping Tampa Palms New

Project Agenda

Signature Tampa Palms 2017



Keeping Tampa Palms New

Board Responsibilities

.....Evaluate.....Ideas, Questions, Suggestions
.....Decision.....Ok as isor what to change
.....Resolution.....Formally approve decision

Public Input

Ideas

Suggestions

Questions

Board Action

Review: Budget Content & Resident Comments

Resolution: Approve Res FY 2016-17-4 Budget
Approve Res FY 2016-17 -5 Assessments

Board Action

Adjourn Budget Hearing

Board Member Discussion

The CDD Public meetings are the only opportunity that Board members have to discuss community issues between themselves. This time is set aside for Board Member discussions.

Public Comments

The Public is encouraged to speak on any matter, on or off the agenda.

There will be another opportunity for public comments at the end of the meeting.

Approval of Minutes

The Board will review and approve the June, 2016 meeting minutes

Approval Disbursements

Each month as part of the Board oversight responsibilities, the Board approves the CDD disbursements.

For May there were disbursements from two accounts due to the transitioned from Iberia Bank to Sunshine Bank

Iberia Bank	\$1,660.28
Sunshine Bank	<u>\$186,250.97</u>
Total Disbursements	\$187,911.25

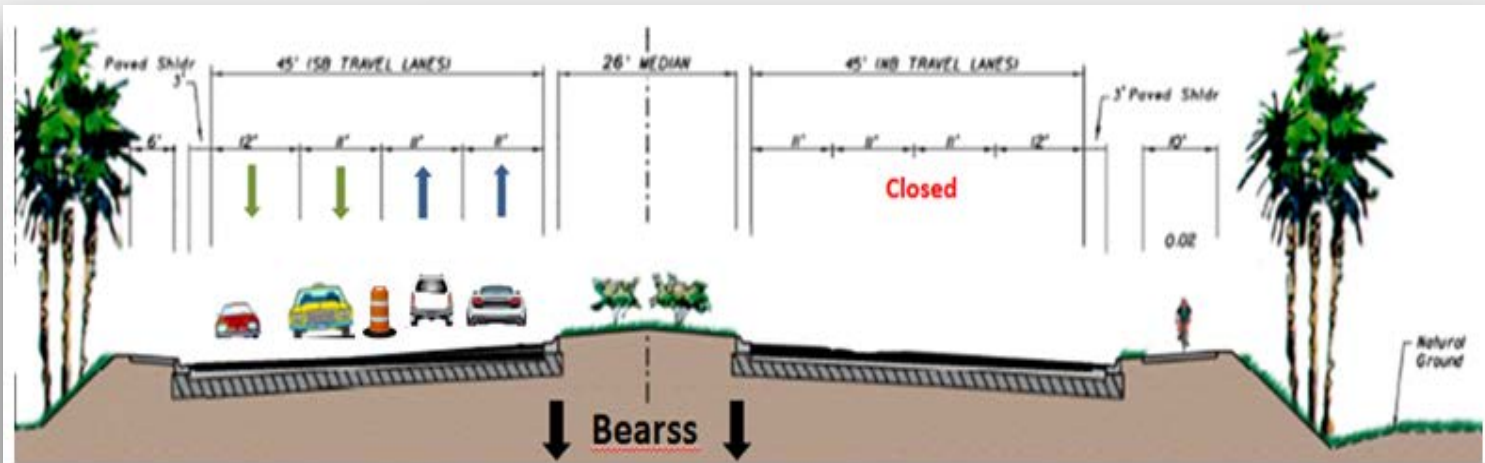
Consultant Reports

BB Downs Update
Community Appearance
Landscape Changes
Wild Life Cautions

BB Downs Update

Main Focus

- Temp Lanes Bridge To Bearss
- Traffic Change 4-6 Weeks



BB Downs Update

Tampa Palms - City Plaza

- Lengthening Left Turn Lane Queue
- Reducing Median
- Trees & Streetlights Removed

Restore After Construction



Community Appearance

Early Summer Heat - Plentiful Rain
Impressive- Despite Construction

- Showy Main Entry
- Crape Myrtles
- Boulevards

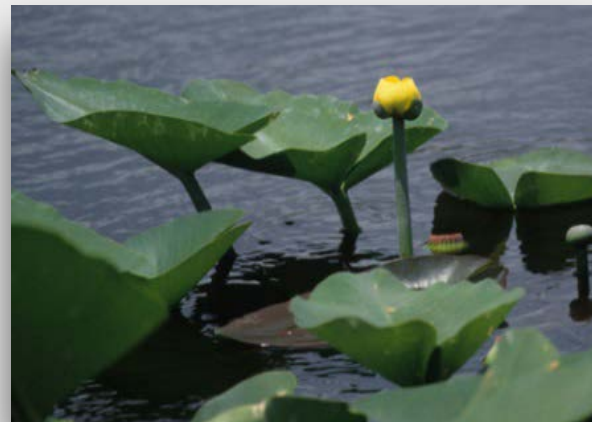


Community Appearance



Ponds Are A Challenge

- Submersible Weeds
- Treatment / Algae
- Lily Growth
 - Slow Removal



Community Appearance



Power Corridor Work

- Minimal Damage .. So Far
- On-Going Inspections

Duke Energy Restoration

- Huge Progress



Community Appearance



Traffic / Landscape Impacts

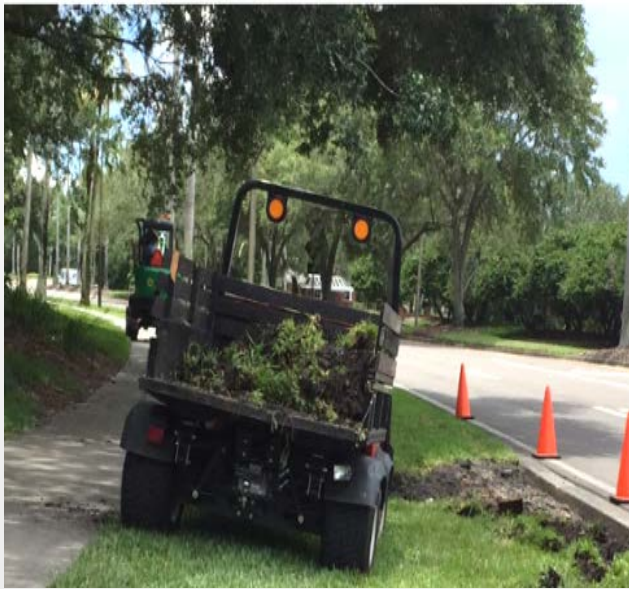
- Amberly & Palma Vista
- Manchester

City Confirmed In Spec

- Traffic Too Fast
- Residents Uncomfortable
- Plants Cutback/ Changed



Community Appearance



Bldv Stormwater Improvement

- Ribbon Curb Strategy
- Water Gathers In Street

Action Taken

- Excavated Area
- Replaced Soil & Turf



Wild Life Cautions



Lots Of Wild Life

- Not Owned By CDD
- Indigenous

Cautions In Place

- Pond Danger Signs

Added Warning

- Signs W/ Pictures
- Effective For Children
- Parks and Bench Areas



CDD Reporting



Public Facilities Report

- Required Upon Completion
- Tampa Palms Complete 1993
- New Requirement
- Under Development

On Line This Month

Public Comments

The public is encouraged to speak on any matter, on or off the agenda

Board Member Discussion

This final time is set aside for
Board Member discussions.

Adjourn

