

Tampa Palms CDD

March 9, 2016



Agenda

- Roll Call / Pledge of Allegiance
- Strategic Planning
- Board Member Discussion Items
- Public Comments
- Consultant Reports
- Other Business
- Public Comments
- Board Member comments
- Adjourn

Strategic Planning

Near Term & Current

	<u>Next Step</u>	<u>Date</u>	<u>Responsible</u>
BB Downs Expansion- Area 2 Entrance Pond			
Structure & Progress	Review	Mar	Staff
BB Downs Construction			
Area 2 Timeline	Review	Mar	Staff
Community Appearance			
Area 1 Entry	Update	Mar	Staff
Area 2 Entry	Review	Mar	Staff
Palm Pests & Removals	Update	Mar	Staff
Crape Myrtle Plan	Update	Mar	Staff

Strategic Planning

Near Term & Current

	<u>Next Step</u>	<u>Date</u>	<u>Responsible</u>
Problem Trees			
Laws & Responsibility	Review	Mar	Staff
Powerline Corridor			
Jogging Path Ownership	Review	Mar	Staff
Parks			
Oak Park Path	Discuss Options	Mar	Staff
Miscellaneous Items			
CLUE Information	Review	Mar	Staff

Board Member Discussion

The CDD Public meetings are the only opportunity that Board members have to discuss community issues between themselves. This time is set aside for Board Member discussions.

Public Comments

The Public is encouraged to speak on any matter, on or off the agenda.

There will be another opportunity for public comments at the end of the meeting.

Approval of Minutes

The Board will review and approve the February meeting minutes.

Approval Disbursements

Each month as part of the Board oversight responsibilities, the Board approves the CDD disbursements.

Disbursements for the month ending January, 31 2016 were \$ 176,486.54

Consultant Reports

Bruce B Downs Update

Bruce B Downs Mitigation

Community Appearance

Power Corridor Trail

Oak Park Paths

Problem Tree Responsibility

CLUE'less

BB Downs Update

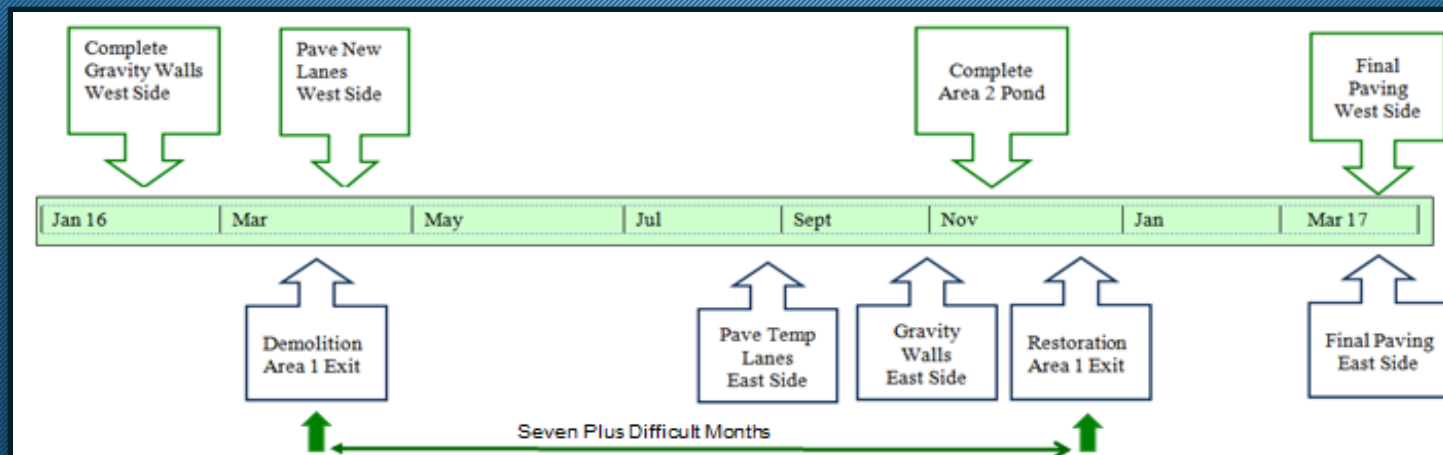


Lane Change Preparations

- Road Crossings Complete
- Gravity Wall
- New Sidewalks

Vibration Analysis

No Change To Timeline



BB Downs Update

Signal Relocation

- 35 Ft Edge of Road
- Stop 50 Ft Back
- Improve When Lanes Move
- Remain Until East-Side Signal Installed



BB Downs Update

Unplanned Changes

Intersection Work

- Median Curb Removed
- Irrigation Cutoff
- Plant Loss
- All For A Good Cause



BB Downs Update



Pond Is Progressing

- Liner Date Uncertain
- No Water Until Lined
- Mounds of Fill Being Reused



BB Downs Mitigation

Area 1 Entry



BB Downs Mitigation

Area 2 Entry



Community Appearance

Crape Myrtles



- Deep Pruning In Progress
- Bud-Out By May
- Tree Conditions
 - One Is Dead
 - All Others Appear Healthy



Community Appearance

Refreshing Reserve Entry



- Repairs Made To Walls
- Non-Thriving Plants Removed
- Walls Being Cleaned
- Plants Restored



Power Corridor Trail

Duke Energy Property



Background

- On Duke Easement
- Limited Accessibility
- Created By Developers
 - No Easement
 - No Permissions

Power Corridor Trail

Duke Energy Property



Legal Opinion

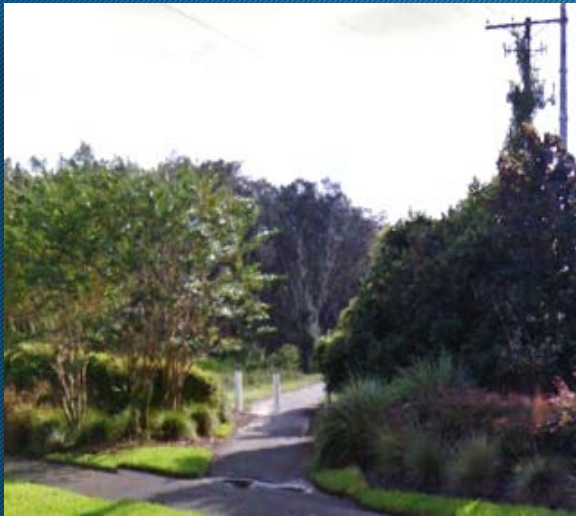
- Use Of Tax Funds
 - Improving Private Property
 - No Overwhelming Public Purpose
- Liability (Adjacent Owners)
 - Flooding
 - Accidents
 - Nuisance

Power Corridor Trail

Duke Energy Property

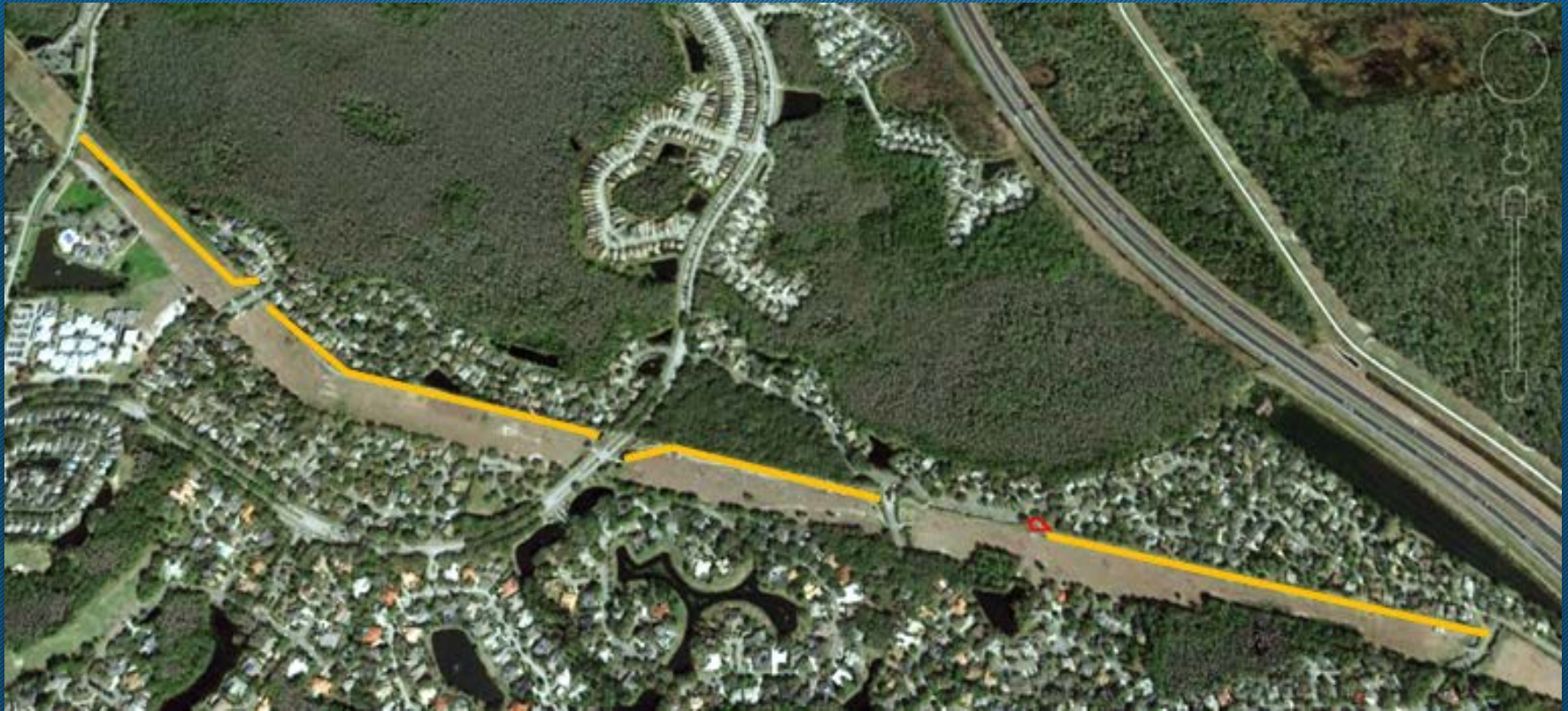
Power Company Position

- No Prior Permission
- Easement To Improve Possible
- CDD To Accept Liability
 - Damage to Structures
 - Accidents / Injuries on Path
 - Damage to Neighboring Properties



Power Corridor Trail

Duke Energy Property



Oak Park Conservation Area

Pedestrian Paths



- Corner Of Yardley & TP Blvd
 - CDD Owned
 - 12 Acres
 - Opens To Power Corridor
- Pedestrian Only- No Parking
- Several Paths
 - Old Asphalt (Yellow)
 - Dirt Only (Blue)

Oak Park

Path Outlines



Oak Park

Restore/Pave Options



Options

- Restore Only Asphalt Paving
 - Entrance & Asphalt Path
 - Leave Dirt Path Unpaved
- Restore Asphalt and Pave Dirt Path
 - More Consistent
 - Safer For Joggers



Oak Park

Surface Types Available



Options

- Standard Asphalt- More likely to breakdown due to ponding. \$
- Porous Asphalt - Green option, more flexible than asphalt. Meets NPDES requirements \$\$\$
- Pervious Concrete - Green option, flexible like asphalt porous asphalt, Meets NPDES requirements \$\$\$\$\$

Oak Park

Surface Types Available



	Asphalt	Porous Asphalt
Asphalt Path		
Dirt Path		
Total Project		

Recommend Pave Both W/
Porous Asphalt

Problem Trees



- Questions About Responsibility
- Law Based On Owner & Health
 - Dead Tree, Owner Responsible
 - Live Tree, Owner Not Responsible
- Ownership Complicated In Tampa Palms
 - Some Lots Have Conservation Areas
 - Some Conservation Areas Are NOT CDD Owned
 - The City Owns Rights of Way

Public Comments

The public is encouraged to speak on any matter, on or off the agenda

Board Member Discussion

This final time is set aside for
Board Member discussions.

Adjourn

